

# HEARTWORM DISEASE



**All dogs are at risk for potentially deadly heartworm disease.** Heartworms live in the heart and blood vessels of the lungs of dogs, cats and other mammals like wolves, foxes and coyotes. Heartworms cannot be spread directly from animal to animal without a mosquito as an intermediary. Heartworms are spread when a mosquito bites an infected dog and picks up tiny larvae called microfilariae from the bloodstream.

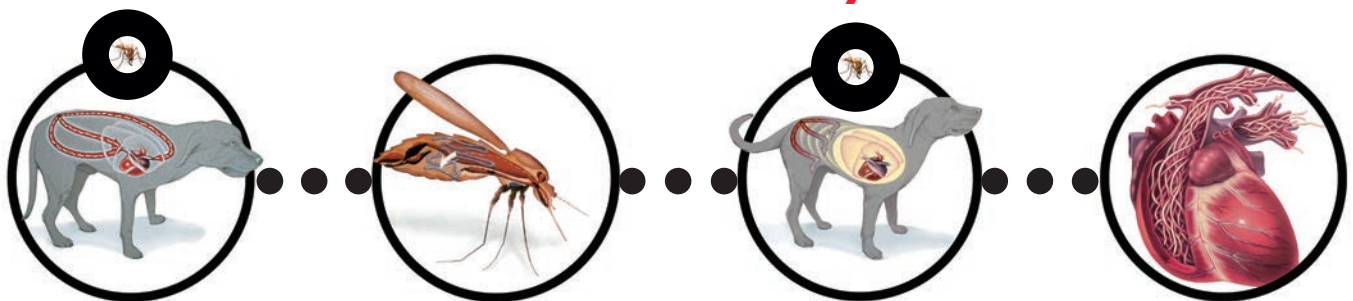
Then that mosquito bites another dog infecting it with the heartworm larvae. Over the next several months the heartworm larvae grow and migrate to the heart and lungs. These larvae mature into adults, which can be a foot in length, and they produce microfilariae that circulate in the bloodstream. Now this dog is a reservoir of heartworms and is ready for another mosquito to bite and infect yet another dog.

Untreated, heartworm disease can lead to severe problems with the heart, lungs, liver and kidneys and may result in death.



**One bite is all it takes**

## Heartworm Life Cycle



**1** A mosquito bites an infected dog and ingests tiny heartworm larvae along with the animal's blood. Other carriers of heartworm disease include wolves, foxes, ferrets, coyotes and raccoons.

**2** Inside the mosquito, these larvae develop into their infective stage.

**3** When the same mosquito bites another dog, the larvae infect the healthy animal.

**4** Without a monthly dose of preventive, the larvae continue to develop inside the dog, eventually reaching the heart and lungs.

**One million dogs are estimated to be heartworm positive in the United States each year.<sup>1</sup>**

**Luckily heartworm disease is preventable and the prevention is cheap and easy when compared to the lengthy, stressful and expensive treatment.**

Treatment can cost up to \$1,000 which makes giving a monthly preventive a bargain in comparison. Treatment requires painful, arsenic-based injections to kill the heartworms present inside the lungs and heart. In addition, this is followed by a 1-3 month period of limited physical activity and possible health complications. Surgery may be required for dogs burdened with large amounts of worms. It is much easier to prevent heartworms than to treat them.



**Heartworm Treatment**

**vs.**

**Heartworm Prevention**

Diagnosis = \$340  
Treatment = \$609  
HEARTWORM TREATMENT  
Boarding = \$150

**\$7**  
HEARTGARD® Plus (ivermectin/pyrantel)  
Real-Beef Chewable / average monthly cost

**\$1,099<sup>2</sup>**  
TOTAL COST

**\$84**  
TOTAL YEARLY COST

## 3 COMMON MISCONCEPTIONS ABOUT HEARTWORMS

### MYTH 1: Indoor dogs are not at risk

**TRUTH:** Heartworms are spread by mosquitoes. One mosquito bite is all it takes for a dog to be infected. All dogs are at risk.

### MYTH 2: Only dogs in heartworm epidemic areas like southeastern states need protection against heartworms

**TRUTH:** Heartworm disease has been reported in all 50 states. One million dogs are estimated to be heartworm positive in the United States each year.<sup>1</sup> The disease continues to spread to new regions. The best way to protect your dog is to administer a heartworm preventive year-round as directed by your veterinarian.

### MYTH 3: Treatment for heartworm disease is just as easy as preventing it.

**TRUTH:** Treatment requires arsenic-based injections to kill the heartworms living in a dog's lungs and heart. In comparison to heartworm prevention, the treatment is expensive (up to \$1,000) and can be traumatic and risky. It is much easier to prevent heartworms than to treat them.

### Important Safety Information:

HEARTGARD (ivermectin) is well tolerated. All dogs should be tested for heartworm infection before starting a preventive program. Following the use of HEARTGARD, digestive and neurological side effects have rarely been reported. For more information, please visit [www.HEARTGARD.com](http://www.HEARTGARD.com).

**Click here for prescribing information**

<sup>1</sup> Line S. Vet's advice: Beware the rising risk of heartworms in dogs. Available at [http://www.usatoday.com/life/lifestyle/pets/2009-08-19-heartworms\\_N.htm](http://www.usatoday.com/life/lifestyle/pets/2009-08-19-heartworms_N.htm). Accessed October 11, 2010.

<sup>2</sup> Vital statistics for your veterinary practice. In: Landeck E, ed. *The Veterinary Fee Reference* 6th ed., Lakewood, CO: AAHA Press, 2009;57, 200, 213, 226, 259, 333.

<sup>3</sup> Market Dynamics: Share report monthly canine heartworm preventives, vet-dispensed treatment; Data on file at Merial.



©HEARTGARD and the Dog & Hand logo are registered trademarks of Merial.  
©2011 Merial Limited, Duluth, GA. All rights reserved. PAR11CNPFWHARTICLE.

**Heartgard®**  
(ivermectin/pyrantel) **Plus**

**Easy to give. Protection to live.**

**#1 vet-recommended preventive<sup>3</sup>**

# Heartgard® (ivermectin/pyrantel) Plus

## CHEWABLES

**CAUTION:** Federal (U.S.A.) law restricts this drug to use by or on the order of a licensed veterinarian.

**INDICATIONS:** For use in dogs to prevent canine heartworm disease by eliminating the tissue stage of heartworm larvae (*Dirofilaria immitis*) for a month (30 days) after infection and for the treatment and control of ascarids (*Toxocara canis*, *Toxascaris leonina*) and hookworms (*Ancylostoma caninum*, *Uncinaria stenocephala*, *Ancylostoma braziliense*).

**DOSAGE:** HEARTGARD® Plus (ivermectin/pyrantel) should be administered orally at monthly intervals at the recommended minimum dose level of 6 mcg of ivermectin per kilogram (2.72 mcg/lb) and 5 mg of pyrantel (as pamoate salt) per kg (2.27 mg/lb) of body weight. The recommended dosing schedule for prevention of canine heartworm disease and for the treatment and control of ascarids and hookworms is as follows:

Dog Weight	Chewables Per Month	Ivermectin Content	Pyrantel Content	Color Coding On Foil Backing and Carton
Up to 25 lb	1	68 mcg	57 mg	Blue
26 to 50 lb	1	136 mcg	114 mg	Green
51 to 100 lb	1	272 mcg	227 mg	Brown

HEARTGARD Plus is recommended for dogs 6 weeks of age and older. For dogs over 100 lb use the appropriate combination of these chewables.

**ADMINISTRATION:** Remove only one chewable at a time from the foil-backed blister card. Return the card with the remaining chewables to its box to protect the product from light. Because most dogs find HEARTGARD Plus palatable, the product can be offered to the dog by hand. Alternatively, it may be added intact to a small amount of dog food. The chewable should be administered in a manner that encourages the dog to chew, rather than to swallow without chewing. Chewables may be broken into pieces and fed to dogs that normally swallow treats whole.

Care should be taken that the dog consumes the complete dose, and treated animals should be observed for a few minutes after administration to ensure that part of the dose is not lost or rejected. If it is suspected that any of the dose has been lost, redosing is recommended.

HEARTGARD Plus should be given at monthly intervals during the period of the year when mosquitoes (vectors), potentially carrying infective heartworm larvae, are active. The initial dose must be given within a month (30 days) after the dog's first exposure to mosquitoes. The final dose must be given within a month (30 days) after the dog's last exposure to mosquitoes.

When replacing another heartworm preventive product in a heartworm disease preventive program, the first dose of HEARTGARD Plus must be given within a month (30 days) of the last dose of the former medication.

If the interval between doses exceeds a month (30 days), the efficacy of ivermectin can be reduced. Therefore, for optimal performance, the chewable must be given once a month on or about the same day of the month. If treatment is delayed, whether by a few days or many, immediate treatment with HEARTGARD Plus and resumption of the recommended dosing regimen will minimize the opportunity for the development of adult heartworms.

Monthly treatment with HEARTGARD Plus also provides effective treatment and control of ascarids (*T. canis*, *T. leonina*) and hookworms (*A. caninum*, *U. stenocephala*, *A. braziliense*). Clients should be advised of measures to be taken to prevent reinfection with intestinal parasites.

**EFFICACY:** HEARTGARD Plus Chewables, given orally using the recommended dose and regimen, are effective against the tissue larval stage of *D. immitis* for a month (30 days) after infection and, as a result, prevent the development of the adult stage. HEARTGARD Plus Chewables are also effective against canine ascarids (*T. canis*, *T. leonina*) and hookworms (*A. caninum*, *U. stenocephala*, *A. braziliense*).

**ACCEPTABILITY:** In acceptability and field trials, HEARTGARD Plus was shown to be an acceptable oral dosage form that was consumed at first offering by the majority of dogs.

**PRECAUTIONS:** All dogs should be tested for existing heartworm infection before starting treatment with HEARTGARD Plus which is not effective against adult *D. immitis*. Infected dogs must be treated to remove adult heartworms and microfilariae before initiating a program with HEARTGARD Plus.

While some microfilariae may be killed by the ivermectin in HEARTGARD Plus at the recommended dose level, HEARTGARD Plus is not effective for microfilariae clearance. A mild hypersensitivity-type reaction, presumably due to dead or dying microfilariae and particularly involving a transient diarrhea, has been observed in clinical trials with ivermectin alone after treatment of some dogs that have circulating microfilariae.

**Keep this and all drugs out of the reach of children.**

In case of ingestion by humans, clients should be advised to contact a physician immediately. Physicians may contact a Poison Control Center for advice concerning cases of ingestion by humans.

Store between 68°F - 77°F (20°C - 25°C). Excursions between 59°F - 86°F (15°C - 30°C) are permitted. Protect product from light.

**ADVERSE REACTIONS:** In clinical field trials with HEARTGARD Plus, vomiting or diarrhea within 24 hours of dosing was rarely observed (1.1% of administered doses). The following adverse reactions have been reported following the use of HEARTGARD: Depression/lethargy, vomiting, anorexia, diarrhea, mydriasis, ataxia, staggering, convulsions and hypersalivation.

**SAFETY:** HEARTGARD Plus has been shown to be bioequivalent to HEARTGARD, with respect to the bioavailability of ivermectin. The dose regimens of HEARTGARD Plus and HEARTGARD are the same with regard to ivermectin (6 mcg/kg). Studies with ivermectin indicate that certain dogs of the Collie breed are more sensitive to the effects of ivermectin administered at elevated dose levels (more than 16 times the target use level) than dogs of other breeds. At elevated doses, sensitive dogs showed adverse reactions which included mydriasis, depression, ataxia, tremors, drooling, paresis, recumbency, excitability, stupor, coma and death. HEARTGARD demonstrated no signs of toxicity at 10 times the recommended dose (60 mcg/kg) in sensitive Collies. Results of these trials and bioequivalency studies, support the safety of HEARTGARD products in dogs, including Collies, when used as recommended.

HEARTGARD Plus has shown a wide margin of safety at the recommended dose level in dogs, including pregnant or breeding bitches, stud dogs and puppies aged 6 or more weeks. In clinical trials, many commonly used flea collars, dips, shampoos, anthelmintics, antibiotics, vaccines and steroid preparations have been administered with HEARTGARD Plus in a heartworm disease prevention program.

In one trial, where some pups had parvovirus, there was a marginal reduction in efficacy against intestinal nematodes, possibly due to a change in intestinal transit time.

**HOW SUPPLIED:** HEARTGARD Plus is available in three dosage strengths (See DOSAGE section) for dogs of different weights. Each strength comes in convenient cartons of 6 and 12 chewables.

For customer service, please contact Merial at 1-888-637-4251.



©HEARTGARD and the Dog & Hand Logo are registered trademarks of Merial.  
©2011 Merial Limited, Duluth, GA. All rights reserved.